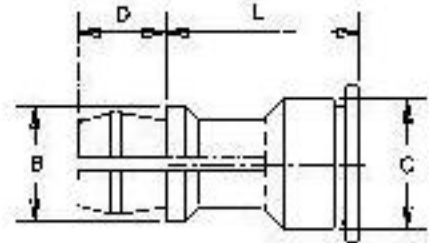
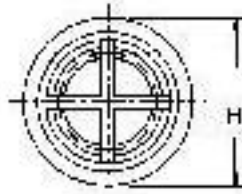
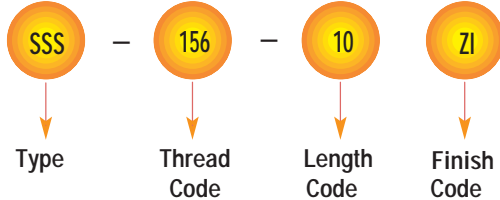


EDMTM SELF CLINCHING QUICK RELEASE STANDOFF

TYPES EDM-SSA, EDM-SSS, EDM-SSC



Product Code EDM-01 Part Number Designation



All dimensions are in inches.

UNIFIED	Type			Top Panel Mounting Hole Diameter Code	Length Code "L" ±.005 (Length Code in 32nds of an inch)										B	C	D	H	
	Fastener Material				156											±.005	Max.	±.005	±.005
	Aluminum	Carbon Steel	Stainless Steel			.250	.312	.375	.437	.500	.562	.625	.750	.875	1.00	.188	.212	.141	.250
SSA	SSS	SSC		8	10	12	14	16	18	20	24	28	32						

All dimensions are in millimeters.

METRIC	Type			Top Panel Mounting Hole Diameter Code	Length Code "L" ±0.13 (Length Code in millimeters)										B	C	D	H	
	Fastener Material				4mm											±0.13	Max.	±0.13	±0.13
	Aluminum	Carbon Steel	Stainless Steel			8	10	12	14	16	18	20	22	25	4.78	5.39	3.58	6.35	
SSA	SSS	SSC																	

MATERIAL & FINISH SPECIFICATIONS

Material	Code
Aluminum	SSA
Carbon Steel (Post Heat Treatment)	SSS
300 Series Stainless Steel	SSC

Finishes	Code
Zinc	ZI

** Types Of Zinc Plate

- Blue Zinc
- Clear Zinc
- Rainbow Zinc

1. Specifications subject of change without notice.
2. Available On Custom Make Specification.

INSTALLATION

Types EDM-SSA, EDM-SSS, EDM-SSC

1. Punch or drill the properly sized mounting hole in the panel.
2. Place the Fastener through the mounting hole of the panel and into the anvil as shown in the drawing.
3. With punch and anvil surfaces parallel apply only enough squeezing force to embed the head flush with the panel.

