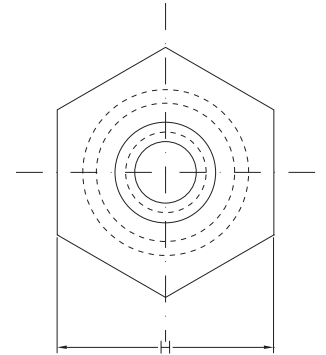
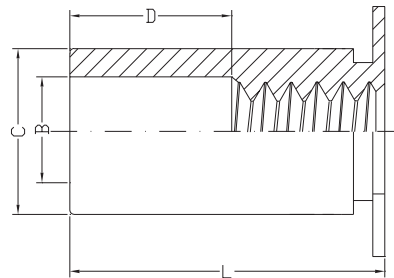
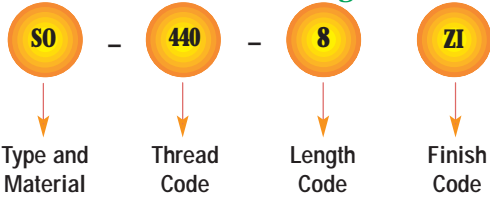


EDMTM SELF-CLINCHING STANDOFFS

TYPES EDM-SO, EDM-SON, EDM-SOA, EDM-SOS
THRU-HOLE THREADED STANDOFFS



Product Code EDM-01
Part Number Designation



- UNIFIED

UNIFIED (inch)	Thread Code	Min. Sheet Thickness	Hole Size In Sheet +0.03 -0.00	B Counter-Bore Dia. ±.005	C +0.00 -0.05	H Nom.	Min. Dist. Hole C/L To Edge
	440	.040	.166	.125	.165	.187	.23
6440	.040	.213	.125	.212	.250	.27	
632	.040	.213	.156	.212	.250	.27	
8632	.050	.281	.156	.280	.312	.31	
832	.050	.281	.188	.280	.312	.31	
032	.050	.281	.203	.280	.312	.31	

- METRIC

METRIC (mm)	Thread Code	Min. Sheet Thickness	Hole Size In Sheet +0.08	B Counter-Bore Dia. ±0.13	C -0.13	H Nom.	Min. Dist. Hole C/L To Edge
	M3	1.02	4.20	3.20	4.19	4.76	6.00
3.5M3	1.02	5.40	3.20	5.38	6.35	6.80	
M3.5	1.02	5.40	3.90	5.38	6.35	6.80	
M4	1.27	7.20	4.80	7.11	8.00	8.00	
M5	1.27	7.20	5.35	7.11	8.00	8.00	

THREAD SIZE AND LENGTH SELECTION DATA

UNIFIED (inch)	Thread Size	Type				Thread Code	Length "L" +.002 -.005 (Length Code in 32nds of an inch)														
		Steel	Steel Non Heat-treated	Stainless Steel	Aluminum		.125	.187	.250	.312	.375	.437	.500	.562	.625	.687	.750	.812	.875	.937	1.00
	.112-40 (#4-40)	SO	SON	SOS	SOA	440 6440 ⁽¹⁾	4	6	8	10	12	14	16	18	20	22	24	N/A	N/A	N/A	N/A
.138-32 (#6-32)	SO	SON	SOS	SOA	632 8632 ⁽¹⁾	4	6	8	10	12	14	16	18	20	22	24	26	28	30	32	34
.164-32 (#8-32)	SO	SON	SOS	SOA	832	4	6	8	10	12	14	16	18	20	22	24	26	28	30	32	34
.190-32 (#10-32)					032																
D Dimension ±.010						None			.187			.312			.437						

THREAD SIZE AND LENGTH SELECTION DATA

METRIC (mm)	Thread Size x Pitch	Type				Thread Code	Length "L" +0.05 -.13 (Length Code in millimeters)												
		Steel	Steel Non Heat-treated	Stainless Steel	Aluminum		3	4	6	8	10	12	14	16	18	20	22	25	
M3 X 0.5	SO	SON	SOS	SOA	M3	3	4	6	8	10	12	14	16	18	N/A	N/A	N/A		
					3.5M3 ⁽¹⁾														
M3.5 X 0.6	SO	SON	SOS	SOA	M3.5	3	4	6	8	10	12	14	16	18	20	22	25		
M4 X 0.7					M4														
M5 X 0.8					M5														
D Dimension ±0.25						None			4			8			11				

ED FASTENING SDN BHD

Tel : (60) 4 501 2300 Fax: (60) 4 501 2301 E-mail : info@edm.com.my

Page 1 of 2

EDMTM SELF-CLINCHING STANDOFFS



TYPES EDM-SO, EDM-SON, EDM-SOA, EDM-SOS THRU-HOLE THREADED STANDOFFS

GENERAL DIMENSIONAL DATA

UNIFIED (inch)	Thru-hole Code	Min. Sheet Thickness	Hole Size In Sheet +0.03 -.000	C +0.000 -.005	H Nom.	Min. Dist. Hole C/L To Edge
	4116	.040	.166	.165	.187	.23
	6116	.040	.213	.212	.250	.27
	6143	.040	.213	.212	.250	.27
	8143	.050	.281	.280	.312	.31
	8169	.050	.281	.280	.312	.31
	8194	.050	.281	.280	.312	.31

METRIC (mm)	Thru-hole Code	Min. Sheet Thickness	Hole Size In Sheet +0.08	C -0.13	H Nom.	Min. Dist. Hole C/L To Edge
	43.1	1.02	4.20	4.19	4.76	6.00
	63.1	1.02	5.40	5.38	6.35	6.80
	63.6	1.02	5.40	5.38	6.35	6.80
	83.6	1.27	7.20	7.11	8.00	8.00
	84.1	1.27	7.20	7.11	8.00	8.00
	85.1	1.27	7.20	7.11	8.00	8.00

THRU-HOLE DIAMETER AND LENGTH SELECTION DATA

UNIFIED (inch)	B Thru-hole Diameter +0.04 -0.03	Type				Thru-hole Code	Length "L" +0.002 -0.005 (Length Code in 32nds of an inch)									
		Steel	Steel Non Heat-treated	Stainless Steel	Aluminum		.125	.187	.250	.312	.375	.437	.500	.562	.625	.687
	.116	SO	SON	SOS	SOA	4116 6116 ⁽¹⁾	4	6	8	10	12	14	16	18	20	22
.143	SO	SON	SOS	SOA	6143 8143 ⁽¹⁾	4	6	8	10	12	14	16	18	20	22	24
.169	SO	SON	SOS	SOA	8169	4	6	8	10	12	14	16	18	20	22	24
.194					8194											

METRIC (mm)	B Thru-hole Diameter +0.1 -0.08	Type				Thru-hole Code	Length "L" +0.05 -0.13 (Length Code in millimeters)									
		Steel	Steel Non Heat-treated	Stainless Steel	Aluminum		3	4	6	8	10	12	14	16	18	20
3.1	SO	SON	SOS	SOA	43.1 63.1 ⁽¹⁾	3	4	6	8	10	12	14	16	18	20	
3.6					63.6 83.6 ⁽¹⁾											
4.1	SO	SON	SOS	SOA	84.1	3	4	6	8	10	12	14	16	18	20	
5.1					85.1											

(1) Standoffs with thru-hole codes 6116, 8143, 63.1 and 83.6 offer greater wall thickness for that thru-hole diameter

MATERIAL & FINISH SPECIFICATIONS

Material	Code
Aluminum	SOA
Non Heat Treated Carbon Steel	SON
Carbon Steel (Post Heat Treatment)	SO
300 Series Stainless Steel	SOS

Finishes	Code
Zinc	ZI

** Types Of Zinc Plate

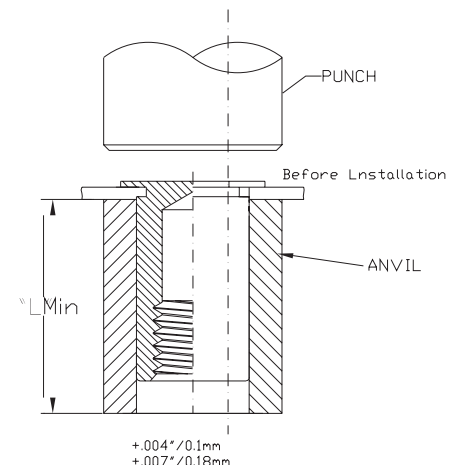
- Blue Zinc
- Clear Zinc
- Rainbow Zinc

- Specifications subject of change without notice.
- Available On Custom Make Specification.

INSTALLATION

Types EDM-SO, EDM-SOS, EDM-SOA, and EDM-SON

- Punch or drill properly sized mounting hole in sheet. Do not perform any secondary operation such as deburring.
- Insert standoff through mounting hole of sheet and into anvil as shown in drawing.
- With punch and anvil surfaces parallel, apply only enough squeezing force to embed the standoff's head flush in the sheet. Drawing at right shows suggested tooling for applying these forces.



ED FASTENING SDN BHD