

EDMTM SELF-CLINCHING KEYLOCK STANDOFFS



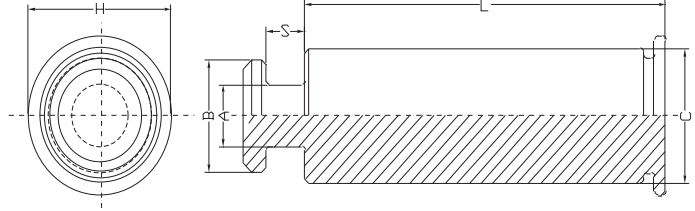
TYPES EDM-SKC

Product Code EDM-01 Part Number Designation

SKC
Type and Material

6060
Body Size and Sheet Thickness Code

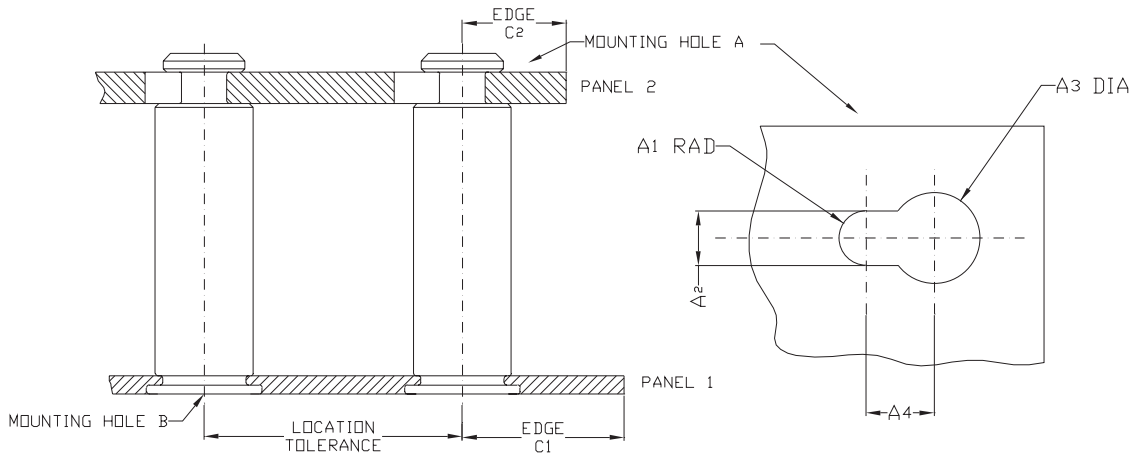
12
Length Code



Fastener Material: 300 Series Steel

UNIFIED (inch)	Type	Body Size - Sheet Code	Length "L" ± .005 (Length Code in 32nds of an inch)											A	B	C	S	M	H	D
	Stainless Steel		.188	.250	.312	.375	.437	.500	.562	.625	.750	.875	1.00	± .003	± .003	Max.	± .003	Max.	Nom	Anvil Hole + .003 - .000
	SKC	6060	6	8	10	12	14	16	18	20	24	28	32	.099	.177	.212	.068	.108	.250	.216

METRIC (mm)	Type	Body Size - Sheet Code	Length "L" ± 0.13 (Length Code in millimeters)											A	B	C	S	M	H	D
	Stainless Steel		6	8	10	12	14	16	18	20	22	25	± 0.08	± 0.08	Max.	± 0.08	Max.	Nom	Anvil Hole + 0.08	
	SKC	61.5	6	8	10	12	14	16	18	20	22	25	2.50	4.50	5.38	1.72	2.75	6.35	5.50	



UNIFIED (inch)	PANEL 1					PANEL 2							
	Type	Bottom Mounting Hole B + .003 - .000	Hardness Max.	Thickness Min.	Edge Distance C ₁ Min.	Location Tolerance Max.	Top Mounting Hole A				Material	Thickness Range	Edge Distance C ₂ Min.
SKC	.213	HRB 70	.040	.260	± .005	A ₁ Nom.	A ₂ ± .003	A ₃ ± .003	A ₄ Min.				
	SKC	.213	HRB 70	.040	.260	± .005	.059	.118	.197	.148	PC Board or Metal	.057-.064	.160

METRIC (mm)	PANEL 1					PANEL 2							
	Type	Bottom Mounting Hole B + 0.08	Hardness Max.	Thickness Min.	Edge Distance C ₁ Min.	Location Tolerance Max.	Top Mounting Hole A				Material	Thickness Range	Edge Distance C ₂ Min.
SKC	5.4	HRB 70	1	6.6	± 0.13	A ₁ Nom.	A ₂ ± 0.08	A ₃ ± 0.08	A ₄ Min.				
	SKC	5.4	HRB 70	1	6.6	± 0.13	1.5	3.0	5.0	3.7	PC Board or Metal	1.45-1.62	4.10

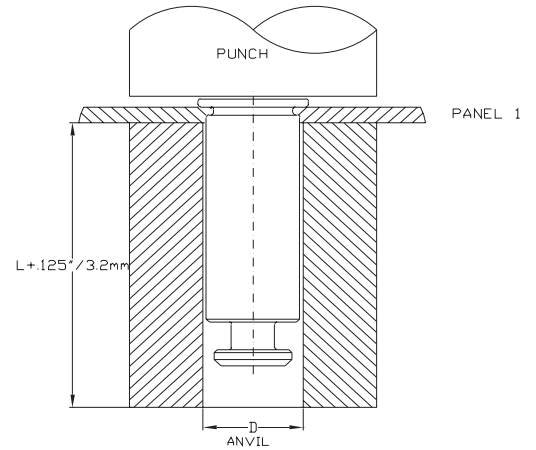
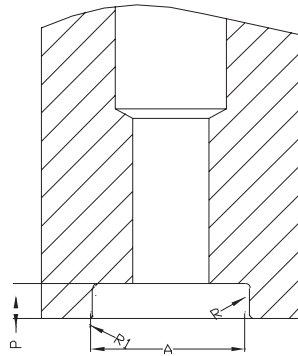
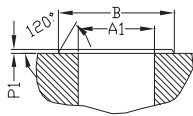
EDMTM SELF-CLINCHING KEYLOCK STANDOFFS

TYPES EDM-SKC



INSTALLATION

1. Punch or drill properly sized mounting hole in Panel 1.
2. Place the barrel of the fastener through mounting hole and into anvil as shown in drawing to the right.
3. With the punch and anvil surfaces parallel, apply only enough squeezing force to embed the head flush with the panel.



MATERIAL & FINISH SPECIFICATIONS

Material	Code
300 Series Stainless Steel	SKC

1. Specifications subject to change without notice.
2. Available On Custom Make Specification.