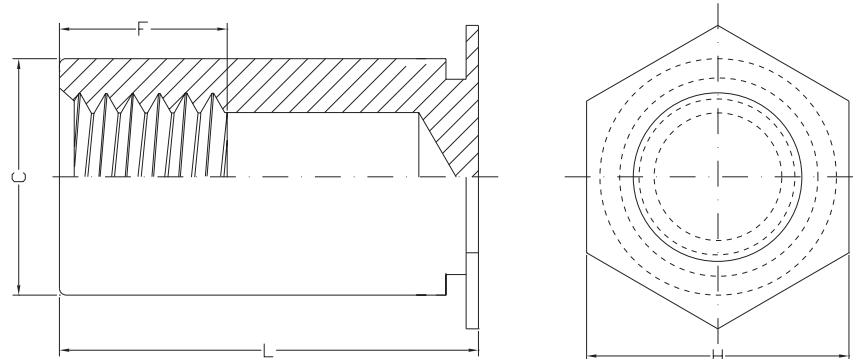
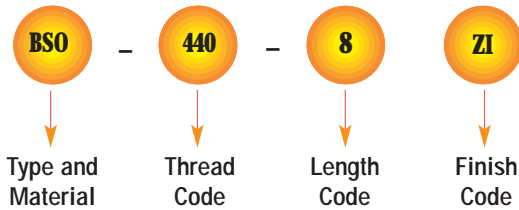


TYPES EDM-BSO, EDM-BSON, EDM-BSOA, EDM-BSOS BLIND THREADED STANDOFFS - UNIFIED & METRIC



Product Code EDM-01 Part Number Designation



GENERAL DIMENSIONAL DATA

UNIFIED (inch)	Thread Code	Min. Sheet Thickness	Hole Size In Sheet +.003 -.000	C +.000 -.005	H Nom.	Min. Dist. Hole C/L To Edge
	440	.040	.166	.165	.187	.23
	6440	.040	.213	.212	.250	.27
	632	.040	.213	.212	.250	.27
	8632	.050	.281	.280	.312	.31
	832	.050	.281	.280	.312	.31
	032	.050	.281	.280	.312	.31

METRIC (mm)	Thread Code	Min. Sheet Thickness	Hole Size In Sheet +0.08	C -0.13	H Nom.	Min. Dist. Hole C/L To Edge
	M3	1.02	4.20	4.19	4.76	6.00
	3.5M3	1.02	5.40	5.38	6.35	6.80
	M3.5	1.02	5.40	5.38	6.35	6.80
	M4	1.27	7.20	7.11	8.00	8.00
	M5	1.27	7.20	7.11	8.00	8.00

THREAD SIZE AND LENGTH SELECTION DATA

UNIFIED (inch)	Thread Size	Type				Thread Code	Length "L" +.002 -.005 (Length Code in 32nds of an inch)												
		Steel	Steel Non Heat-treated	Stainless Steel	Aluminum		.312	.375	.437	.500	.562	.625	.687	.750	.812	.875	.937	1.00	1.062
	.112-40 (#4-40)	BSO	BSON	BSOS	BSOA	440 6440 ⁽¹⁾	10	12	14	16	18	20	22	24	26	28	30	32	34
.138-32 (#6-32)	BSO	BSON	BSOS	BSOA	632 8632 ⁽¹⁾	10	12	14	16	18	20	22	24	26	28	30	32	34	
.164-32 (#8-32)	BSO	BSON	BSOS	BSOA	832	10	12	14	16	18	20	22	24	26	28	30	32	34	
032																			
F Dimension Min.							.156	.187	.250										.375

(1) Standoffs with thread codes 6440 and 8632 offer greater wall thickness for thread sizes 440 and 632, respectively

METRIC (mm)	Thread Size x Pitch	Type				Thread Code	Length "L" +0.05 -0.13 (Length Code in millimeters)										
		Steel	Steel Non Heat-treated	Stainless Steel	Aluminum		6	8	10	12	14	16	18	20	22	25	
	M3 X 0.5	BSO	BSON	BSOS	BSOA	M3 3.5M3 ⁽¹⁾	6	8	10	12	14	16	18	20	22	25	
M3.5 X 0.6	M3.5																
M4 X 0.7	M4																
M5 X 0.8	M5																
F Dimension Min.							3.2	4	5	6.5	9.5						

(1) Standoffs with thread codes 3.5M3 offer greater wall thickness for M3 thread size.

EDMTM SELF-CLINCHING STANDOFFS

TYPES EDM-BSO, EDM-BSON, EDM-BSOA, EDM-BSOS
BLIND THREADED STANDOFFS - UNIFIED & METRIC



MATERIAL & FINISH SPECIFICATIONS

Material	Code
Aluminum	BSOA
Non Heat Treated Carbon Steel	BSON
Carbon Steel (Post Heat Treatment)	BSO
300 Series Stainless Steel	BSOS

Finishes	Code
Zinc	ZI

** Types Of Zinc Plate

- Blue Zinc
- Clear Zinc
- Rainbow Zinc

1. Specifications subject of change without notice.
2. Available On Custom Make Specification.

INSTALLATION

Types EDM-BSO, EDM-BSOS, EDM-BSOA, and EDM-BSON

1. Punch or drill properly sized mounting hole in sheet. Do not perform any secondary operation such as deburring.
2. Insert standoff through mounting hole of sheet and into anvil as shown in drawing.
3. With punch and anvil surfaces parallel, apply only enough squeezing force to embed the standoff's head flush in the sheet. Drawing at right shows suggested tooling for applying these forces.

