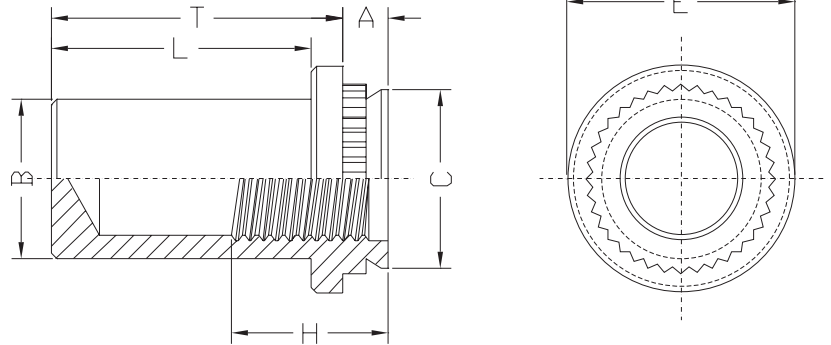
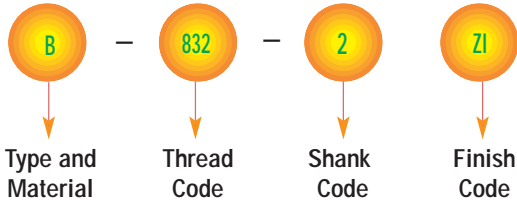


EDMTM SELF-CLINCHING BLIND FASTENER



TYPES EDM-B, EDM-BS

Product Code EDM-01 Part Number Designation



FOR SHEETS AS THIN AS .040" / 1MM

UNIFIED (inch)	Thread Size	Type		Thread Code	Shank Code	A Max.	Min. Sheet Thickness	Hole Size in Sheet + .003 - .000	Barrel Diameter B Max.	Shank Diameter C Max.	E ± .010	Min. Depth Full Threads H	L Max.	T ± .010	Min. Dist. Hole C/L to Edge
		Steel	Stainless Steel												
.112-40 (#4-40)	B	BS	440	1	.038	.040	.166	.150	.165	.250	.210	.335	.380	.190	
				2	.054	.056									
.138-32 (#6-32)	B	BS	632	1	.038	.040	.1875	.169	.187	.280	.230	.335	.380	.220	
				2	.054	.056									
.164-32 (#8-32)	B	BS	832	1	.038	.040	.213	.204	.212	.310	.280	.385	.440	.270	
				2	.054	.056									
.190-32 (#10-32)	B	BS	032	1	.038	.040	.250	.235	.249	.340	.280	.385	.440	.280	
				2	.054	.056									
.250-20 (1/4-20)	B	BS	0420	1	.054	.056	.344	.305	.343	.430	.310	.500	.560	.340	
				2	.087	.090									

METRIC (mm)	Thread Size x Pitch	Type		Thread Code	Shank Code	A Max.	Min. Sheet Thickness	Hole Size in Sheet + 0.08	Barrel Diameter B Max.	Shank Diameter C Max.	E ± 0.25	Min. Depth Full Threads H	L Max.	T ± 0.25	Min. Dist. Hole C/L to Edge
		Steel	Stainless Steel												
M3 x 0.5	B	BS	M3	1	0.97	1	4.25	3.84	4.22	6.35	5.30	8.50	9.60	4.80	
				2	1.38	1.4									
M4 x 0.7	B	BS	M4	1	0.97	1	5.40	5.20	5.38	8.00	7.10	9.80	11.20	6.90	
				2	1.38	1.4									
M5 x 0.8	B	BS	M5	1	0.97	1	6.40	6.02	6.38	8.70	7.10	9.80	11.20	7.10	
				2	1.38	1.4									
M6 x 1	B	BS	M6	1	1.38	1.4	8.70	7.80	8.70	11.00	7.80	12.70	14.30	8.60	
				2	2.21	2.3									

MATERIAL & FINISH SPECIFICATIONS

Material	Code
Carbon Steel (Post Heat Treatment)	B
300 Series Stainless Steel	BS

Finishes	Code
Zinc	ZI

** Types Of Zinc Plate

- Blue Zinc
- Clear Zinc
- Rainbow Zinc

1. Specifications subject of change without notice.
2. Available On Custom Make Specification.

EDMTM SELF-CLINCHING BLIND FASTENER

TYPES EDM-B, EDM-BS



INSTALLTION

1. Punch or drill properly sized mounting hole in the sheet. Do not perform any secondary operations such as deburring.
2. Place the barrel of the fastener into the anvil hole and place the mounting hole over the shank of the fastener
3. With the punch and anvil surfaces parallel, apply squeezing force until the flange contacts the mounting sheet. Examples of installation forces are shown below. The sketch at the right indicates suggested tooling for applying these forces.

