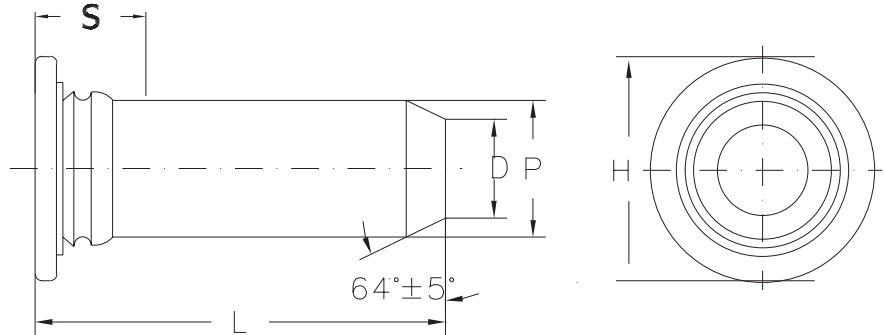
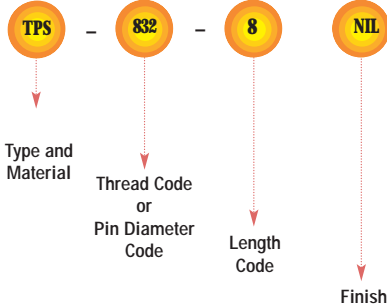


EDMTM SELF-CLINCHING STUDS AND PINS

TYPE EDM-TPS



Product Code EDM-01 Part Number Designation



UNIFIED (inch)	Pin Diameter P ±.002	Type	Pin Diameter Code	Length Code "L" ±0.15 (Length Code in 16ths of an inch)					Min. Sheet Thickness	Hole Size in Sheet +.003 -.000	D ±.006	H ±.015	S Max. (1)	Min. Distance Hole C/L to Edge
				.375	.500	.625	.750	1.00						
.125	TPS	125	6	8	10	12	NA	.040	.144	.090	.187	.090	.250	
.187	TPS	187	6	8	10	12	16	.040	.205	.132	.280	.090	.280	
.250	TPS	250	NA	8	10	12	16	.040	.272	.177	.340	.090	.310	

METRIC (mm)	Pin Diameter P ±0.05	Type	Pin Diameter Code	Length Code "L" ±0.4 (Length Code in millimeters)					Min. Sheet Thickness	Hole Size in Sheet +0.08	D ±0.15	H ±0.4	S Max. (1)	Min. Distance Hole C/L to Edge
				3	4	5	6	NA						
3	TPS	3mm	8	10	12	16	NA	1	3.50	2.05	4.76	2.29	6.40	
4	TPS	4mm	8	10	12	16	NA	1	4.50	2.82	6.35	2.29	7.10	
5	TPS	5mm	NA	10	12	16	20	1	5.50	3.53	7.00	2.29	7.60	
6	TPS	6mm	NA	NA	12	16	20	1	6.50	4.24	8.00	2.29	7.90	

- (1) Pin diameter may exceed max. in this region.
Flush-mounted, self-clinching pilot pins.
Satisfies a wide range of positioning, pivot, and alignment applications.
Chamfered end makes mating hole location easy.

NA Not Available.

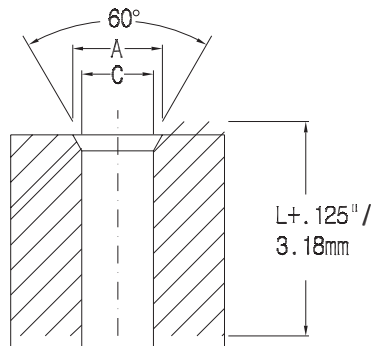
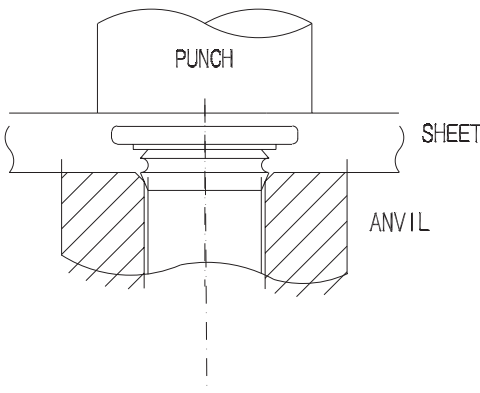
MATERIAL & FINISH SPECIFICATIONS

Material	Code
300 Series Stainless Steel	TPS

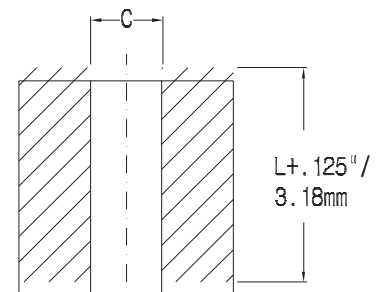
Finishes	Code
-	-

- Specifications subject of change without notice.
- Available On Custom Make Specification.

INSTALLATION



Recommended tooling when a chamfered anvil is not required



Recommended tooling when a chamfered anvil is not required

ED FASTENING SDN BHD